

**TOSHIBA**

Leading Innovation >>>

- > Black & White MFP
- > Up to 50 PPM
- > Small/Med. Workgroup
- > Copy, Print, Scan, Fax
- > Secure MFP
- > EPEAT Registered



**e-STUDIO™ 357/457/507**



# Exceed expectations in powerful ways.

The e-STUDIO507 series from Toshiba has been designed to bring small and medium workgroups the same power and performance typically reserved for larger businesses. It's easy to use, allowing you to create professional looking documents without extensive training or experience.

## Expand your possibilities.

Toshiba has taken the performance and functionality of larger monochrome MFPs and designed a smaller, more compact version. Introducing the e-STUDIO507 series. In addition to copying, faxing, printing and color scanning, it handles even the most challenging jobs quickly and easily. You'll be impressed with handy features like a walk-up USB printing port and a crisp 9" color touch screen that gives you instant access to all sorts of other possibilities.



Get more done in less time with advantages like USB printing and paper that can be added midstream.

## Less work and more flow.

Start with a 20-second warm-up and a first copy out time of 3.7 seconds. Output is produced at the speed that fits your needs – from 35 to 50 pages per minute. Image quality is outstanding at 2,400 x 600 dpi. Need a lot of copies? You can opt for up to a 3,200-sheet capacity. And, its modular design allows you to get the most paper in the sizes you need, with a tandem LCF or 4-drawer configuration.



**e-STUDIO™ 357/457/507**

# It's the business of helping businesses.

At Toshiba, we realize the challenges that businesses face every day. The new e-STUDIO507 series is the perfect solution for small to medium size businesses looking for a high quality, fully functional MFP to help them meet those challenges.

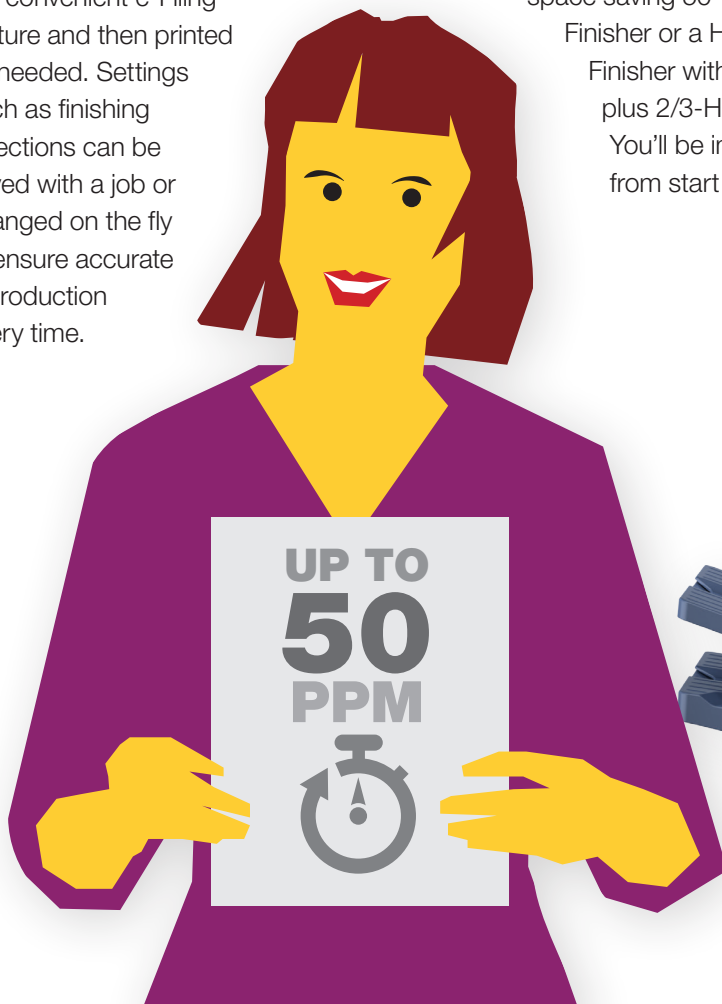
## Relax and let technology handle it.

Because the e-STUDIO507 series has incorporated the latest e-BRIDGE technology, business applications and vendor solutions are easily integrated. With 320GB of safe and secure storage, frequently used documents can be stored right on the MFP by using the convenient e-Filing feature and then printed as needed. Settings such as finishing selections can be saved with a job or changed on the fly to ensure accurate reproduction every time.

## User friendly and eager to please.

The e-STUDIO507 series can handle jobs with ease, even large volumes of various types of documents. Take advantage of up to a 150,000 monthly copy volume and a 36,600 toner yield at 6%. Also, there are several finisher options including a space saving 50-Sheet Inner Finisher or a High-Capacity Finisher with Saddle-Stitch, plus 2/3-Hole Punch. You'll be impressed from start to finish.

- > Superb Image Quality
- > e-BRIDGE Technology
- > Universal Print Driver
- > Fast First Copy Out Times
- > Up to 3,200 Capacity
- > Service Module Design
- > Saddle Stitch Finisher
- > 2/3 Hole Punch



**TOSHIBA**

Leading Innovation >>>

# Protection for your business and the planet.

As the need for tougher data security and improved environmental protection continue to increase, Toshiba is prepared to answer the call. Much of our R&D is spent in these areas. That's because your concerns are our concerns.



## Data security and peace of mind.

Protecting your data means you're protecting your entire business. Fortunately, the e-STUDIO507 series has been designed to preserve the integrity and confidentiality of all your data. A new 320GB FIPS 140-2 Validated Self-Encrypting Drive (SED) with Data Overwrite are standard. An IPsec option to encrypt data being sent to or from the MFP, and Hard Copy Security are also available to keep your data right where it belongs.

## Eco-consciousness.

At Toshiba, we realize we're responsible for helping our planet thrive. Whether it's our products, our company, or worthwhile environmental projects in your communities, we put green into action. The Toshiba e-STUDIO507 series has a low power sleep mode that meets the stringent requirements of Energy Star Tier 2. It is also RoHS compliant, and uses recycled plastics. Because of this and other eco-friendly features, the Toshiba e-STUDIO507 series is EPEAT Registered in the greener electronics global registry developed to help purchasers choose products that reduce environmental impact. Together we can reduce, reuse and recycle in meaningful ways.

There's a configuration that is just right for every business need. And all of them are secure and EPEAT Registered.





## Small and compact yet feature rich.

The Toshiba e-STUDIO507 series has features and benefits galore. You'll be impressed to find so much in such a compact footprint.



### Efficient printing

Choose your speed at 35, 45, or 50 pages per minute. Also, first copy out times are as fast as 3.7 seconds.



### Broad paper handling

Use up to a 3,200-sheet paper capacity and up to 110 lb index. You can select from a variety of paper sizes with 4 drawers or a tandem LCF.



### Ease of use

A large 9" tilting touch panel is easy to read and use. A context sensitive help button that will provide you with whatever instructions you might need. Scanning or printing can be done on the go using a convenient USB port.



### Reliability

The monthly copy volume goes up to 150,000 with a toner yield of 36,600 at 6% coverage and toner that can be changed on the fly. A compact service module design allows for surprisingly faster and easier periodic maintenance.



### Connectivity and functionality

PCL6, PostScript3, and XPS as well as a Universal Printer Driver means you only need one driver across your entire fleet.



### Innovative technology

Gigabit Ethernet support, e-filing for frequently reprinted jobs and an automatic OCR option for expert scanning are just a few of our leading innovations.



### Latest e-BRIDGE platform

Toshiba's proprietary platform improves connectivity, security and fleet management. Take advantage of access to third-party solutions like PaperCut, Docuware and more.



### Advanced finishing options

There is a convenient Inner Finisher, 50-Sheet High-Capacity Finisher, and a High-Capacity with Saddle-Stitch plus 2/3-Hole Punch.



### Expert security

A 320GB FIPS 140-2 Validated Self-Encrypting Drive (SED) with Automatic Data Invalidation and Data Overwrite come standard. Also, an IPsec option encrypts data, and Hard Copy Security prevents the copying of sensitive documents.



### Environmentally responsible

The e-STUDIO507 series is RoHS Compliant, Energy Star Tier 2 rated and EPEAT Registered (as part of the definitive global registry for greener electronics).





- > **Black & White MFP**
- > **Up to 50 PPM**
- > **Small/Medium Workgroup**
- > **Copy, Print, Scan, Fax**
- > **Secure MFP**
- > **EPEAT Registered**

**Specifications**

Copying Process/Type	IEPM (Dry Process)/Laser Technology
Original Reading Method	CCD Line Sensor
Copy/Print Resolution	2400 x 600 dpi (with Smoothing)
Copy/Print Speed	35/45/50 PPM
Warm-Up Time	Approx. 20 Seconds
First Copy Time	3.7 Seconds
Duty Cycle	125K/150K/150K
Multiple Copying	Up to 999 Copies
Standard Paper Supply	2 x 550-Sheet, 100-Sheet Stack Feed Bypass
Maximum Paper Supply	Up to 3,200 Sheets
Acceptable Paper Size	Cassette: Statement-R to Ledger (17-28 lb), Bypass: Statement-R to Ledger (17-110 lb), LCF: Letter (17-28 lb)
Memory	2GB RAM, 320 GB FIPS 140-2 SED
Reduction/Enlargement	25% to 400%
Bypass Tray	100-Sheet Stack Feed Bypass
Control Panel	9" Wide VGA Color Touch-Screen
Dimensions	Approx. 23" x 23" x 30" (W x D x H)
Weight	Approx. 132 lb
Power Supply	115 Volts, 15 Amps
Power Consumption	Maximum 1.5kW
PM Cycle	125K/150K/150K
Black Toner Yield	36.6K Impressions @ 6%

**e-BRIDGE Print Specifications**

PDL Support	PCL6, PostScript 3, XPS
Operating Systems	Windows Server 2003, 2008, 2012, Vista SP2, 7, 8, NetWare 6.5, Citrix, Macintosh 10.4-10.9, Solaris v10, 11, HP-UX V11.iv3, AIX 7.x, Linux, SCO
Protocol Support	Windows Printing (SMB1.0/2.0), LPR/LPD, IPP (Ver.1.1) w/Authentication, NetWare P-SERVER w/NDS, Binary, Novell NDPS Gateway, or LPD w/ iPrint, Apple Talk PAP or EtherTalk, Port 9100 (bi-directional), WS Print, FTP
Drivers	Windows Server 2003, 2008, 2012, Vista SP2, 7, 8, Macintosh OS 10.4-10.9
Connectivity	10/100/1000BaseTX Ethernet, 802.11b/g/n, Wireless LAN, USB
Wireless Device	AirPrint, e-BRIDGE Print & Capture Application on iOS and Android (Available via Apple App Store or Google Play)
Device Management	Top Access, eFMS 6.0 (e-BRIDGE Fleet Management Software)
Certification	Windows 7, 8, 8.1, 2008R2, 2012, 2012 R2, WHQL, Novell, Citrix

**Scan Specifications**

Scan Speed	57 SPM LT-Size @ 300 dpi, 45 SPM LT-Size @ 600 dpi (When Copying), 43 SPM LT-Size @ 300 dpi (Color Scanning)
Scan Resolution	Up to 600 dpi
File Format	TIFF, PDF, Slim PDF, JPEG, XPS, MS Word, MS Excel, Searchable PDF w/Adv. Scanning Option

**Facsimile Specifications**

Compatibility	Super G3, G3
Data Compression	MH/MR/MMR/JBIG
Transmission Speed	Approx. 3 Seconds Per Page
Fax Modem Speed	33.6 Kbps
Fax Memory	Transmission and Reception 1GB (HDD), Backup Permanent (HDD)
Memory Transmission	100 Jobs, 2,000 Destinations Max, 400 Destinations/Job
Scan Speed	0.7 Seconds Per Page, 50 Scans Per Minute
Other Fax Functions	Internet Fax, Network Fax

**e-Filing Specifications**

Operation Method	Color Touch Screen Control Panel or Client PC
Number of Boxes	1 Public Box, 200 Private User Boxes
Capacity of Boxes	100 Folder Per Box, 400 Documents Per Folder, 1000 Pages Per Documents

**Security (Standard)**

Data Encryption	256 Bit AES
HDD Overwrite	Meets Department of Defense (DoD) Standard 5220.22M
Authentication	LDAP, SMTP, Windows Server Domain

**Accessories (Options)**

<b>Input Options</b>	
100-Sheet RADF	MR3028
Platen Cover	KA1640PC
<b>Additional Paper Options</b>	
550-Sheet Paper Feed Pedestal	KD1025
2,000-Sheet Large Capacity Feeder	KD1026
550-Sheet Paper Feed Unit	MY1033
<b>Finishing Options</b>	
Job Separator	MJ5006
Work Tray	KK4550
Bridge Kit for Finisher	KN2520N
50-Sheet Inner Finisher	MJ1032N
Saddle-Stitch Finisher (High Capacity)	MJ1108
Saddle-Stitch Finisher (Low Capacity)	MJ1033
50-Sheet Staple Console Finisher	MJ1107
2/3-Hole Punch Unit for MJ1032N	MJ6007
2/3-Hole Punch Unit for MJ1107 and MJ1108	MJ6104
2/3-Hole Punch Unit for MJ1033	MJ6008

**Connectivity/Security Options**

Fax Kit	GD1350
2nd Line Fax	GD1260F
IPsec Enabler	GP1080
Wireless LAN Adapter	GN1060
Antenna	GN3010
Meta Scan Enabler	GS1010
Advanced Scanning	GB1280T
Harness Kit for Coin Controller	QQ1180



<b>Corporate Office</b>	9740 Irvine Blvd., Irvine, CA 92618-1631 Tel: 949-462-6000
<b>East Coast</b>	959 Route 46 East, 5th Floor, Parsippany, NJ 07054 Tel: 973-316-2700
<b>Midwest</b>	8770 W. Bryn Mawr Ave., Suite 700, Chicago, IL 60631 Tel: 773-380-6000
<b>South</b>	2037 Bakers Mill Rd., Dacula, GA 30019 Tel: 678-546-9385
<b>West Coast</b>	9740 Irvine Blvd., Irvine, CA 92618 Tel: 949-462-6000
<b>Web Site</b>	www.business.toshiba.com

Designs and specifications subject to change without notice. For best results and reliable performance, always use supplies manufactured or designated by Toshiba. Not all options and accessories may be available at the time of product launch. Please contact a local Authorized Toshiba Dealership for availability. Toner yields are estimates based on 6% coverage, letter-size page. Driver and connectivity feature support varies by client/network operating system.